



QUICK JOINT FITTINGS

Art. 3001KB

Coupling fitting stainless steel/copper

Patented
EP2397739B1

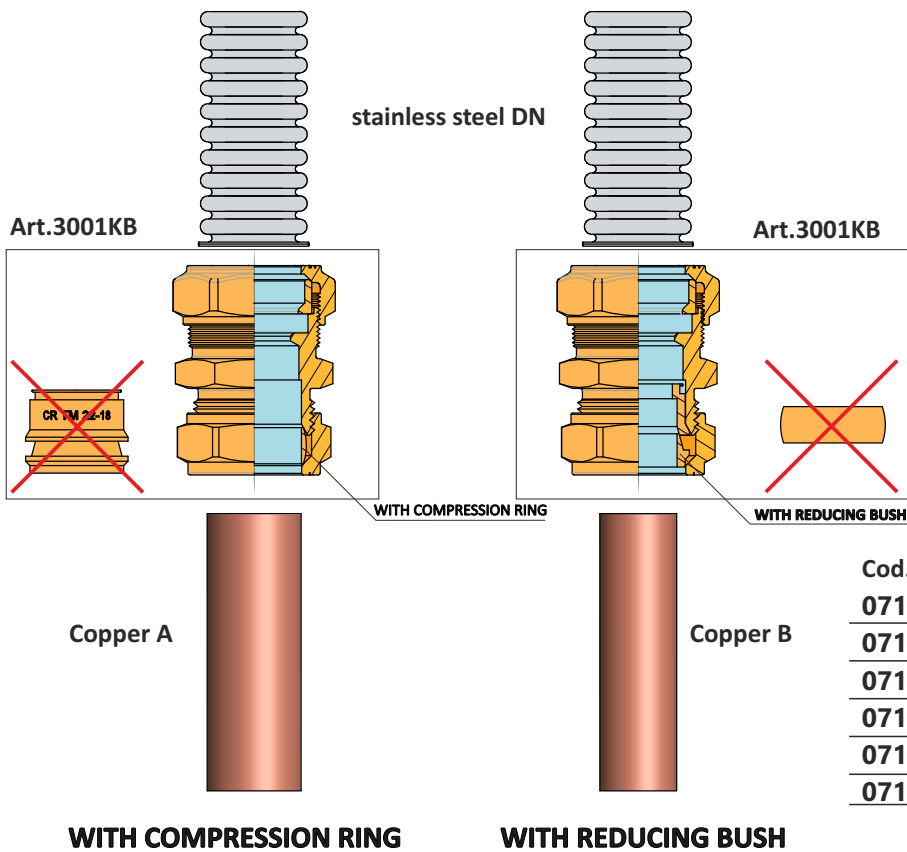
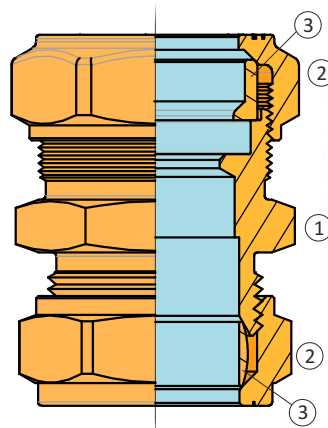
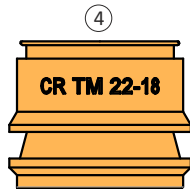
Technical Features

Maximum working temperature : 280°C
Maximum working pressure : 16 bar
Male / female threads : ISO 228

Description

Material

- | | |
|--------------------|----------------------|
| ① Body | CW617N-EN12165 brass |
| ② Nut | CW617N-EN12165 brass |
| ③ Compression ring | CW617N-EN12164 brass |
| ④ Reducing bush | CW617N-EN12164 brass |



Cod.	stainless steel	Copper A	Copper B
0710130	DN12	Ø12	
0710166	DN12	Ø16	
0710046	DN16	Ø15	
0710047	DN16	Ø22	Ø18
0710048	DN20	Ø22	Ø18
0710049	DN25	Ø22	Ø18

WITH COMPRESSION RING WITH REDUCING BUSH

STAINLESS STEEL PIPE CONNECTION

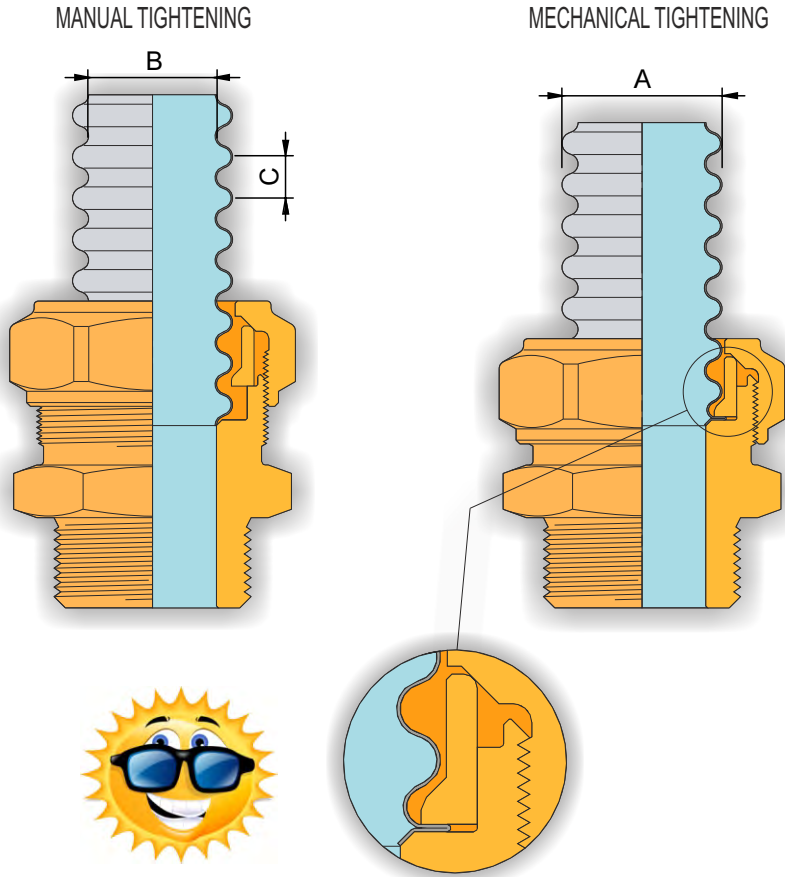
FAST CONNECTION SYSTEM FOR STAINLESS STEEL CORRUGATED PIPES FROM DN12 TO DN40

«COBRASUN» pipe fittings are the fast, reliable innovative solution for stainless steel corrugated pipe connections. Just insert the pipe into the pipe fitting and after you hear the «CLACK», which guarantees that the compression ring on the pipe is in the correct position, you can go on with tightening using fitting wrenches. The system is suitable for any type of plant with fluids compatible with brass and stainless steel.





Patented
EP2397739B1



In the table below the recommended pipe sizes are reported: for different diameters contact our Technical Office

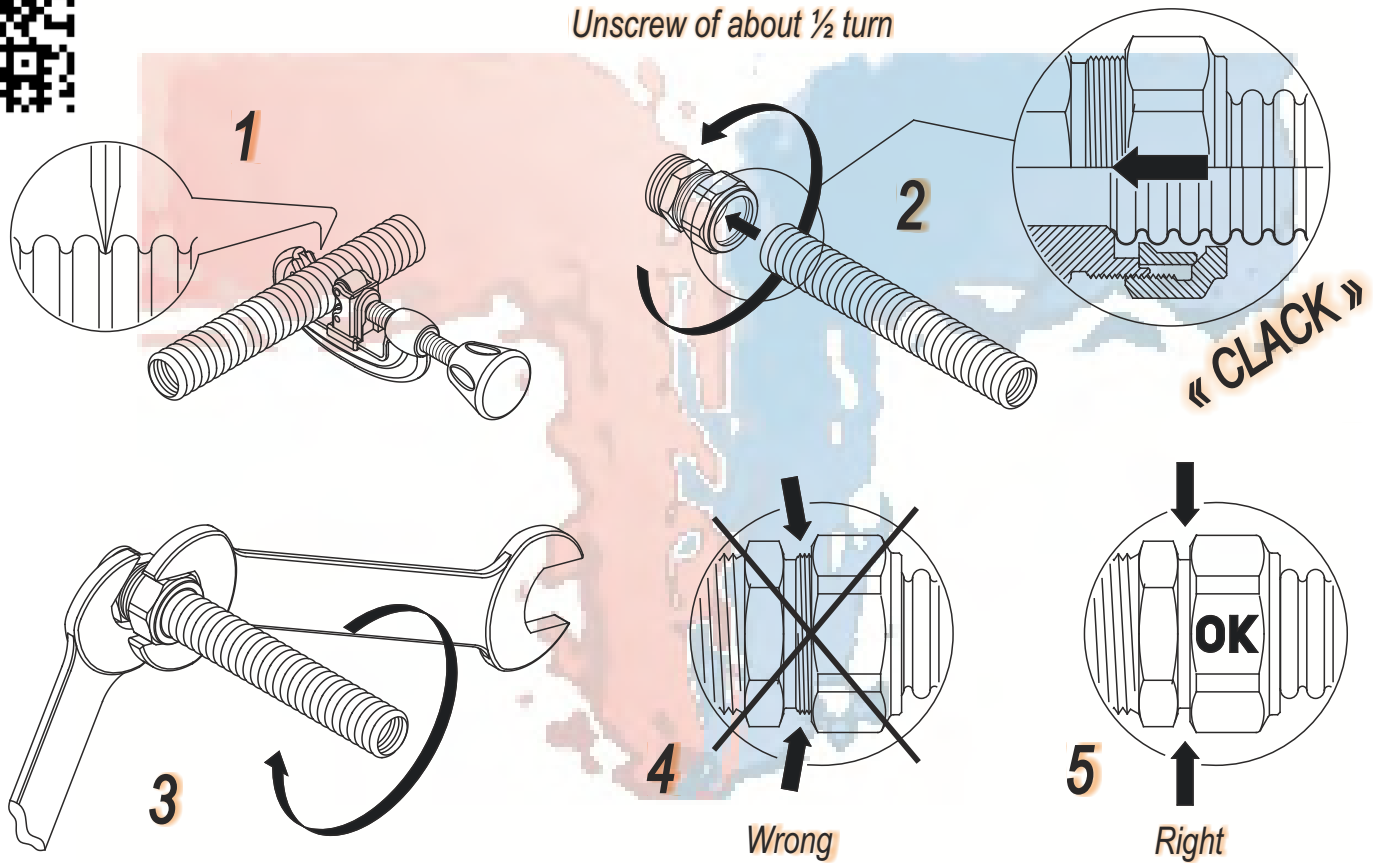
DN nominal diameter	A	B	C
12	16,5 ± 0,10	12,5 ± 0,50	4 ± 0,50
16	21,4 ± 0,20	16,8 ± 0,50	5 ± 0,50
20	26,4 ± 0,20	20,8 ± 0,50	5 ± 0,50
25	31,7 ± 0,25	25,5 ± 0,50	5 ± 0,50

MOUNTING SPECIFICATIONS

Cut the corrugated pipe ensuring that the tool blade enters one of the external grooves (Fig.1) and remains perpendicular to the axis of the pipe itself. The cut must be clean, i.e. without any obvious burr and sharp chips. Remove the pipe fitting and slacken the nut by hand by about ½ a turn, unless this has already been done. Push the pipe into the pipe fitting making sure that you hear the «CLACK» noise (Fig.2), which guarantees that the compression ring is in the correct position on the corrugated coils. At this point you can proceed with mechanical tightening using wrenches or similar tools (Fig.3). Be very careful when carrying out the final tightening, which must not be carried out as in Fig. 4 but as in Fig. 5, i.e. the nut must completely hide the threads on the body of the pipe fitting.

N.B. It is possible that in order to hear the «CLACK» noise on pipes with a small external diameter you do not have to slacken the nut of the pipe fitting but you have to tighten it slightly by hand, before connecting the pipe.

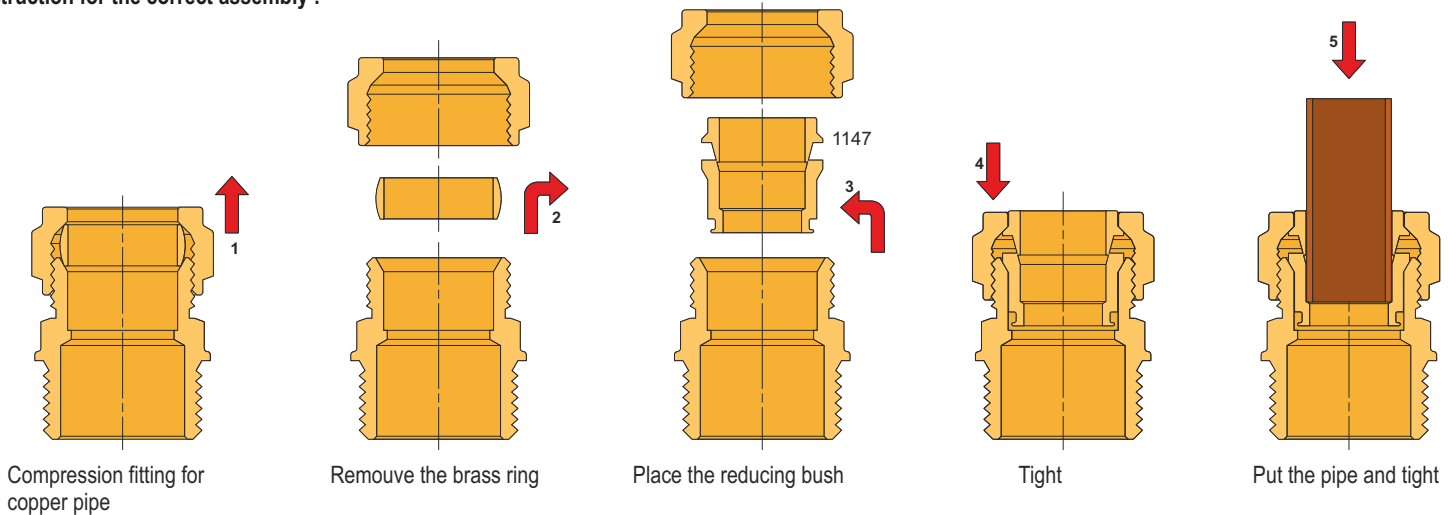
However, for all cases when the sizes of the pipe are different from those in the diameters table on page 1, you are advised to contact our Technical Office.



COPPER PIPE CONNECTION WITH REDUCING BUSH

Reducing bush is suitable only for copper pipes or calibrated steel pipes; for any other application please contact our Technical Service. The bush must be lubricated with potable oil or grease in order to allow a more uniform strain and also to obtain an easier assembling.

Instruction for the correct assembly :



Instruction for the correct screw:

- A) screw the nut manually as much as possible
- B) by a spanner screw the nut for a 1/4 of turn till the ring breaks
- C) finally screw again the nut according to the number of turns indicated in the table

CODICE/CODE	Giri di serraggio dado / Nut tightness table	
	min.1	max.1 1/4
22-18		