



THERMOSTATIC HEAD

Art. 9553

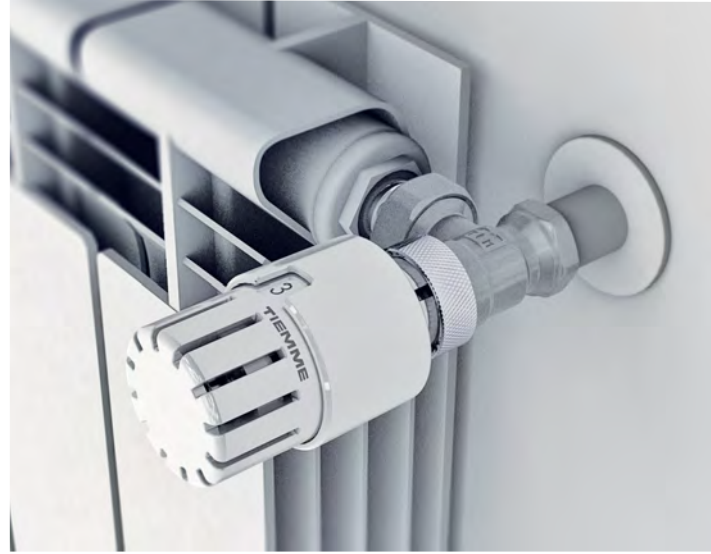
Thermostatic head with built in sensor with liquid element.

Art 9553 thermostatic head (combined with tiemme thermostatic valves) is the ideal solution to adjust the temperature quickly, powering the radiators by acting in a simple and intuitive way.

The end result will give you significant energy savings without giving up your comfort at home.

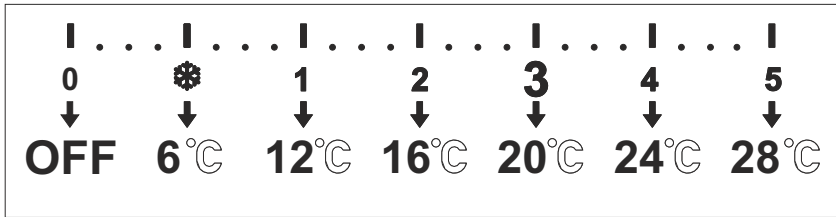
Technical Features

Sensing element:	built-in sensor with liquid filled element
Calibration range:	6 - 28°C
Anti-freeze level:	6°C
Max working room temperature:	50°C
Valve connection:	M30x1,5
Max fluid temperature:	100°C
Max circuit pression:	10 bar
Max differential pressure:	1 bar



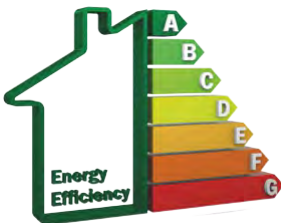
For complete range see catalogue

Setpoint range



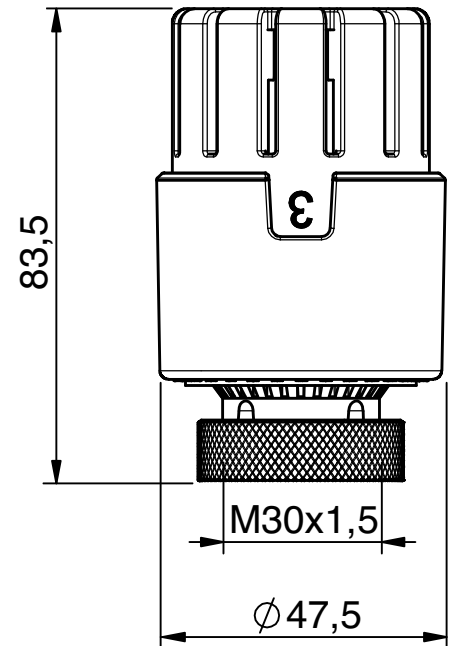
WARNING:

To avoid locking the screw, we advise to turn the knob to the position of maximum opening (5) in the summer period.



The 9553 control head complies with provisions of the Italian Decree of the Ministry of Economy and Finance of 19 February 2007 and Legislative Decree of 6 December 2011 and following

Drawing and dimensions



Quality guaranteed, it's TIEMME!



NO WASTE = Energy and economic savings

Precise temperature management for a better level of COMFORT



Technical features and more



1

Top quality materials

Tiemme's thermostatic control head is produced with top quality materials having high technical and mechanical characteristics.

The pleasant feeling to the touch and long life are only a few of the features which distinguish this product.

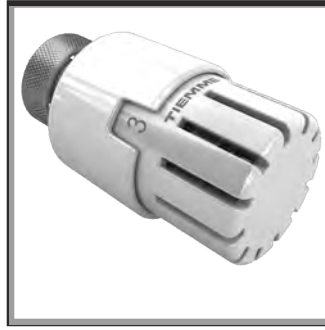
2

Ergonomic and user-friendly design

Whether used in public or private areas, the simple line allows the product to perfectly fit in with any situation.

The minimal design has been optimised to offer rapid installation times and ease of use.

Customisation and indication of operating values are minimum and conceived to avoid errors or mistakes.



3

An Italian product with a German heart.

At a first glance, different heads may appear to be very similar. But inside? Are they really the same?

The 9553 control head is designed by Tiemme's technical department. The production process takes place entirely in the Italian premises of Tiemme where the perfect functioning of each product is checked and guaranteed before delivery.

When choosing the sensing element the choice fell on German technology which has always been up-to-date for this type of component.

The 9553 control head is an Italian product with a German heart.



4

The 9553 control head offers the possibility of limiting the operating temperature to preset values. By inserting the special clips – available upon request – it is possible to define a limited range of values or limit the temperature to a precise value.

For further information, we invite you to visit our website:

www.tiemme.com

Temperature restriction

After temperature regulation it is suggested to block the knob on itself or to limit the operation zone.

Blocking wheel on position 3° (20°C) example:

* Set nr. 3 into the symbol visualization window;

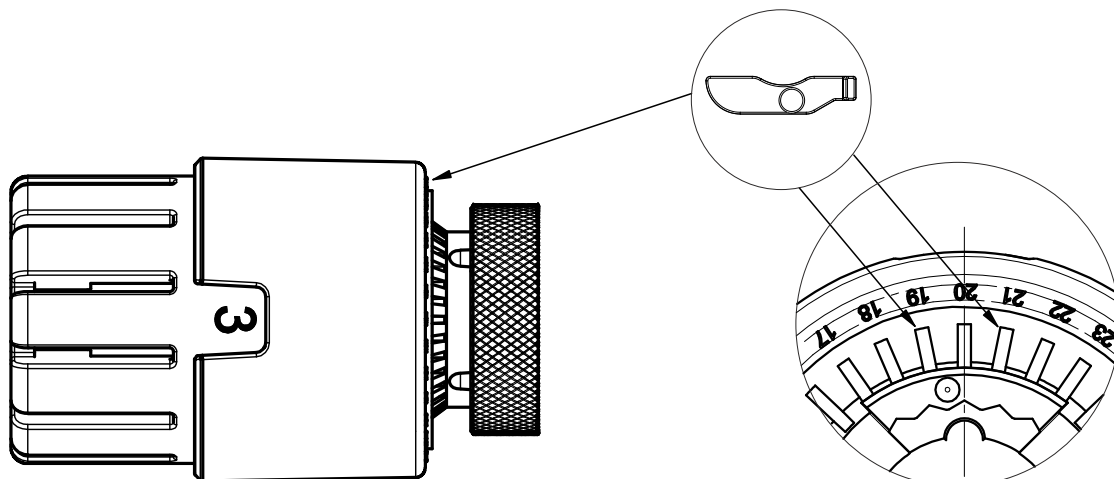
* You will see numbers on the wheel, those numbers are ref. to the temperature regulated by the thermostatic head;

* Search n°20 (correspondent to 20°C)

* Insert the dedicated insert into the spaces close to n°20;

* The wheel will be blocked on symbol 3° position.

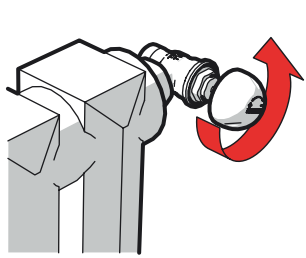
If you want to limit the regulation to a wider range of value displace the inserts into the desired positions. For movement blocking or movement limitation you should use the dedicated inserts codes 9550037 available as accessory.



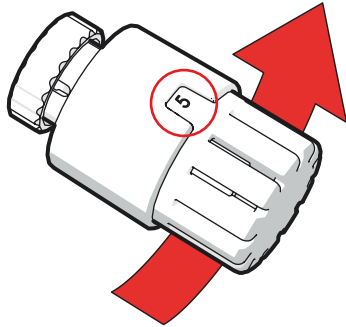


Installation

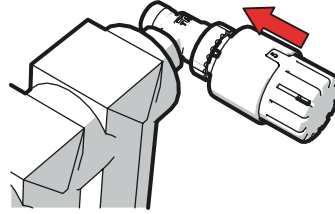
Fitting the thermostatic head on the tiemme thermostatic radiators valves is quick and easy as there is no need to drain the heating system.
Assembly instructions:



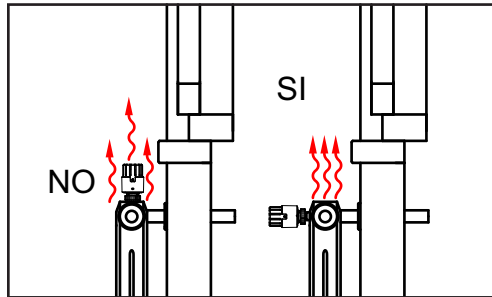
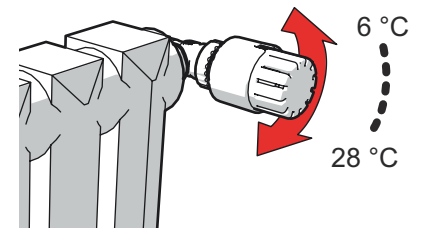
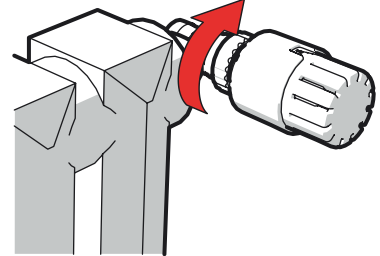
Remove either the cap or the handle from the radiator valve



Set the thermostatic head in position 5 (radiator valve fully open)



Screw the nickel plated ring nut and then set the thermostatic head



Remember that the thermostatic head **MUST BE** installed in a horizontal position

Installations not allowed

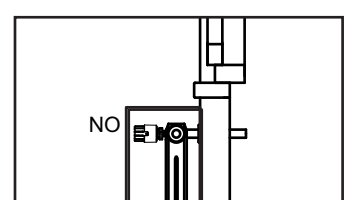
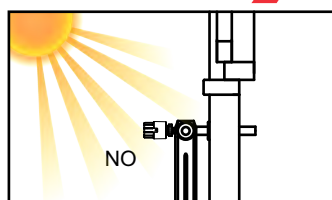
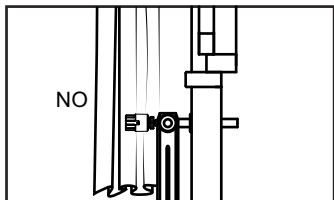
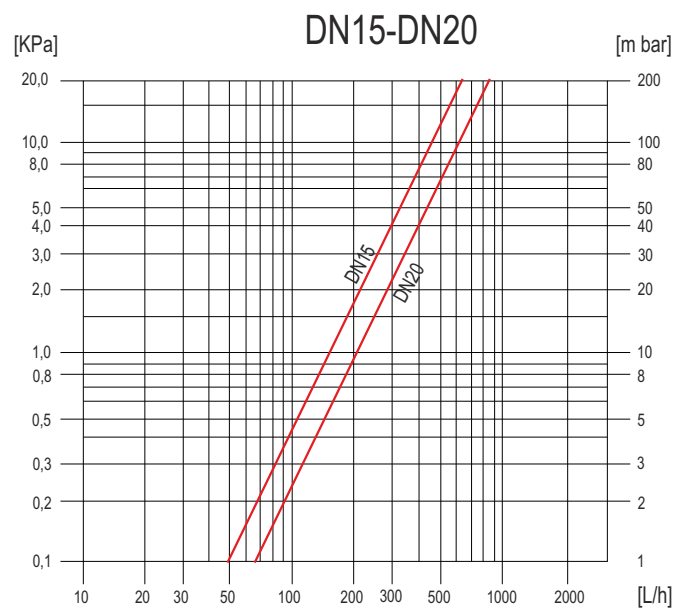
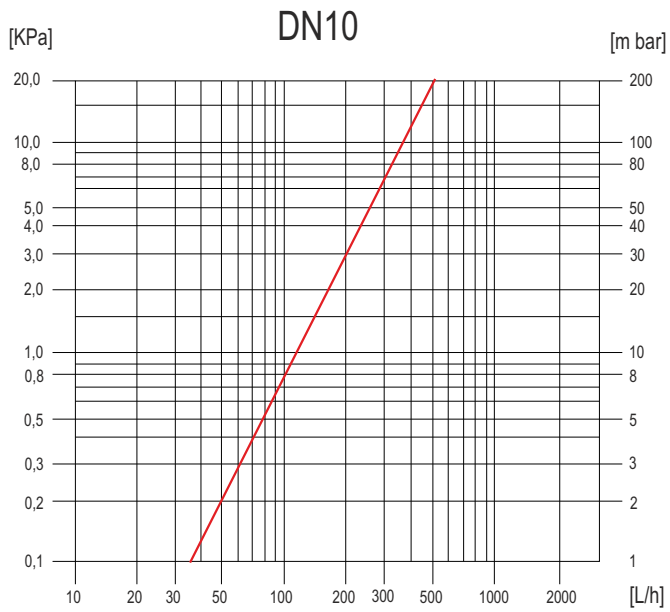


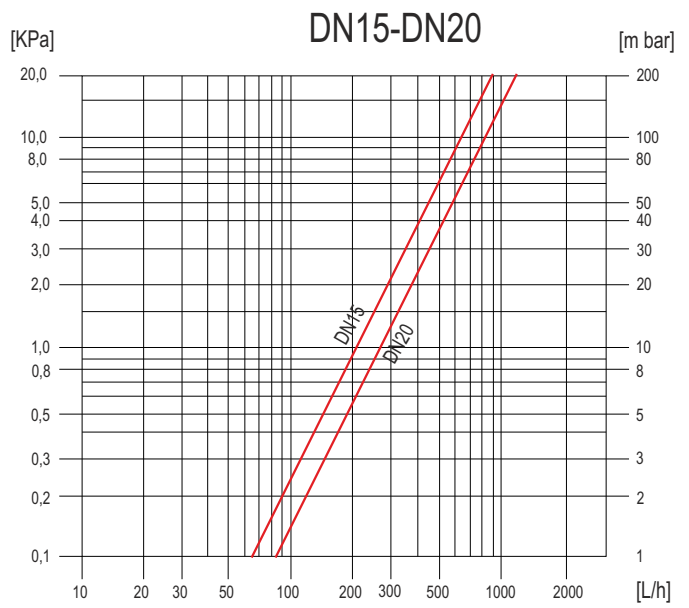
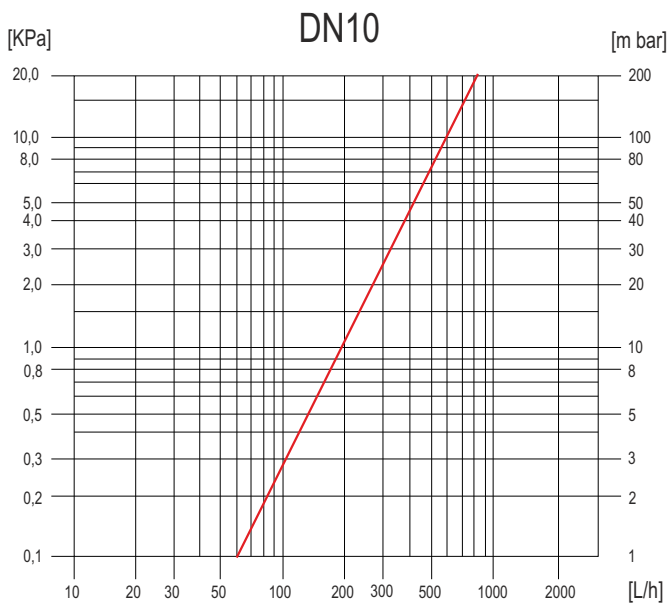


Chart drop pressure/flow rate

Pressure drop flow rate chart for straight thermostatic valves art. 3300, 3202 (male thread) and art. 3305, 3307 (female thread)



Pressure drop flow rate chart for angle thermostatic valves art. 3301, 3203 (male thread) and art. 3306, 3308 (female thread)



Specifications

Thermostatic head for thermostatic valves. Sensor incorporated with liquid-filled component.

Maximum working room temperature 50°C. Graduated scale from * to 5 corresponding to a temperature range of 6°C (antifreeze function) to 28°C.



Accessories



Art. 9553AM1

Vandal proof and anti-tampering knob for thermostatic head



Art. 9553INS

Pair of temperature limitation inserts for thermostatic head



Art. 9553AM2

Vandal proof and anti-tampering kit for thermostatic head



Art. 9553CHT

Key for kit vandal resistant and tampering thermostatic head 9553/9553C